

# **Flamborough Quarry Haul Route Study**

---

## **Information Session**

**Public Open House #4 and Meeting**

**June 23<sup>rd</sup>, 2008**

# Tonight's Topics

---

- **Purpose of tonight's meeting**
- **Study process**
- **Interim Findings**
  - **Public Input**
  - **Analysis**
  - **Evaluation**
- **Next steps**

# Purpose of Tonight's Meeting

---

- **This is an information session to:**
  - **Update the community on where we are**
  - **Share interim findings**
- **Obtain your comments and input on the information presented in this PIC**
  - **opportunity to influence findings**

# **Ongoing discussions with CART**

---

- **CART is still reviewing interim findings**
- **We are seeking CART comments and input**
- **CART is clarifying details they need to complete their review**
- **Will provide information requested by CART**
- **CART considering engaging peer reviewers**
- **Will continue to have ongoing discussions with CART**

# Study Process

---

- **Based on CART approved Terms of Reference (April 2006)**
- **Process consistent with *Environmental Assessment Act***
- **Consider all aspects of the environment**

# Haul Route Study

---

- **Was requested by the City and CART as supplementary information to assist in the review of the proposal submitted in 2004.**
- **City of Hamilton provided Terms of Reference for the Study**
- **The Haul Route Study provides information required by the City and CART to review the overall application**
- **The comprehensive planning review includes many other components**

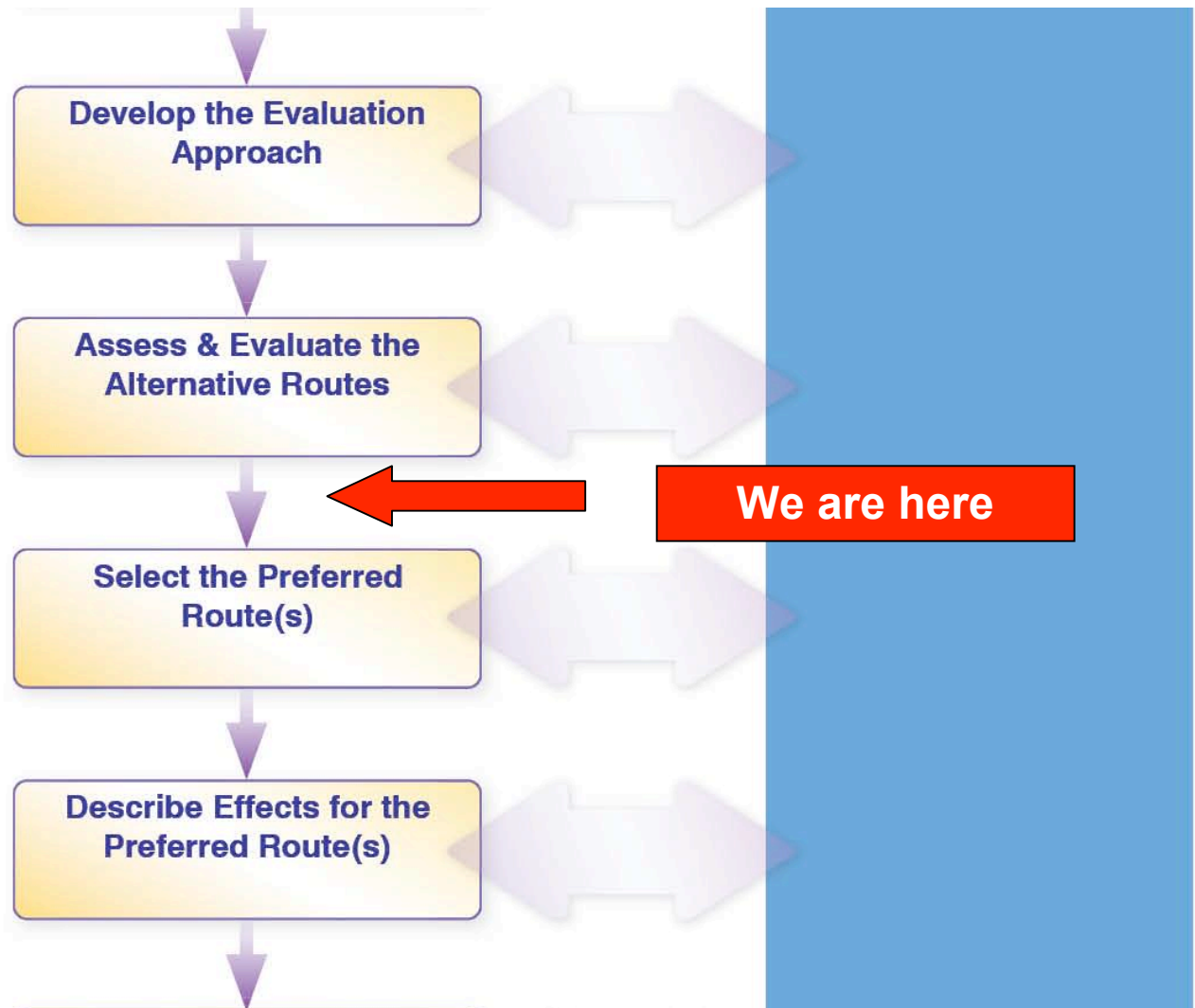
# **We invite your input**

---

- **No recommendations at this time for a preferred haul route – all options are on the table**
- **Welcome and invite input from the public, agencies, stakeholders**
- **Based on input received, after this meeting, we will revise the analysis and evaluation of the alternative haul routes**

# Brief Review – Where we are Today

---



une 23, 2008



# **Interim Findings**

---

# **Community input on potential impacts of haul routes**

---

- **The following highlights public comments that were incorporated into the analysis:**
  - **Volume of truck traffic**
  - **Vibration and dust**
  - **Safety of cyclists and pedestrians**
  - **School bus traffic**
  - **Existing road conditions**
  - **Home equity and property value**
  - **Character of the roads**

# Interim Analysis of Impacts of Alternative Haul Routes

---

- Aquatic Environment
  - Terrestrial Environment
  - Land Uses
  - Social Environment and Community Impacts
  - Economic Environment and Business Impacts
  - Cultural and Heritage Resources
  - Transportation
  - Cost
- Sharing interim analysis results
  - Presented for review by CART and the public
  - Will be revised based on input received

<b>Major Criteria</b>	<b>Relative Weighting</b>
Aquatic Environment / Surface Water	More Important
Terrestrial Environment	More Important
Land Uses	Important
Social Environment and Community Impacts	Most Important
Economic Environment and Business Impacts	More Important
Cultural and Heritage Resources	Important
Transportation and Safety	Most Important
Cost	More Important

# Community input on relative importance of criteria

---

- Incorporated into the evaluation of alternative haul routes

# Interim Evaluation to Compare Alternative Haul Routes

---

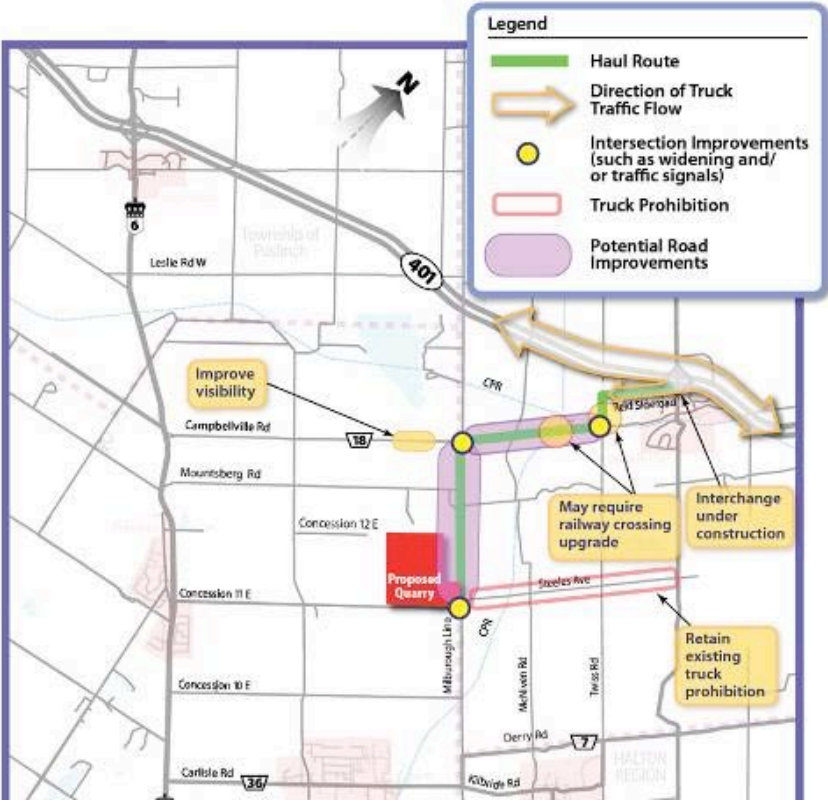
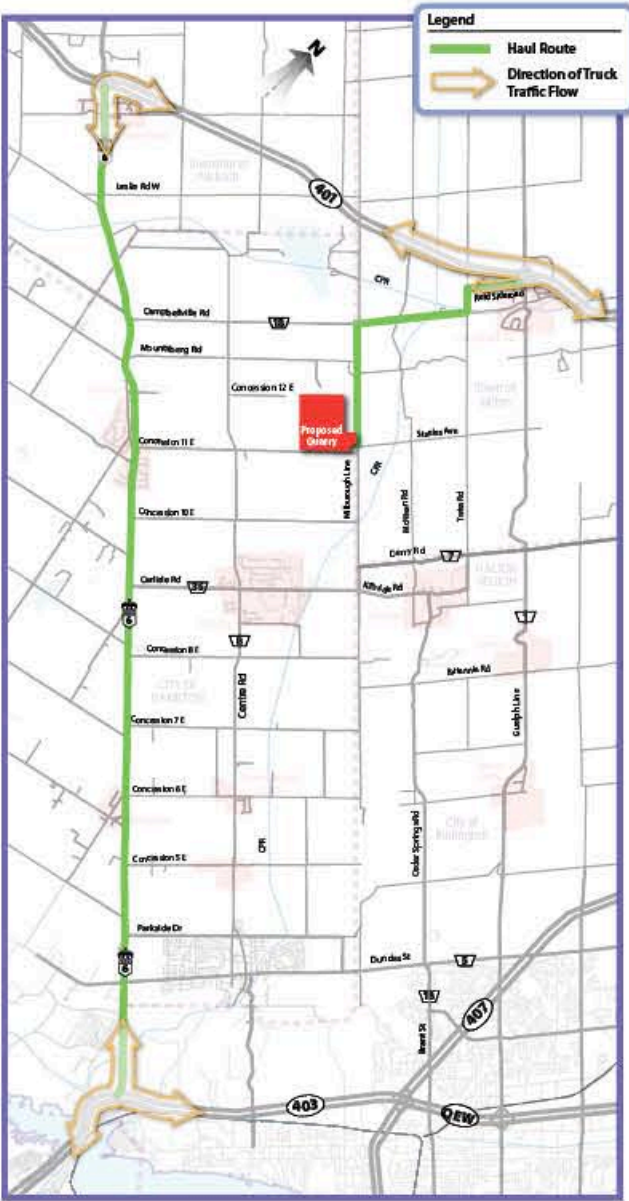
- Two separate methods:
  - Qualitative
  - Quantitative
- Compare the results
- Sensitivity Testing
- Sharing interim evaluation findings
- No recommendations
- Presented for review by CART and the public
- Will be revised based on input received

# **Five Alternative Haul Routes**

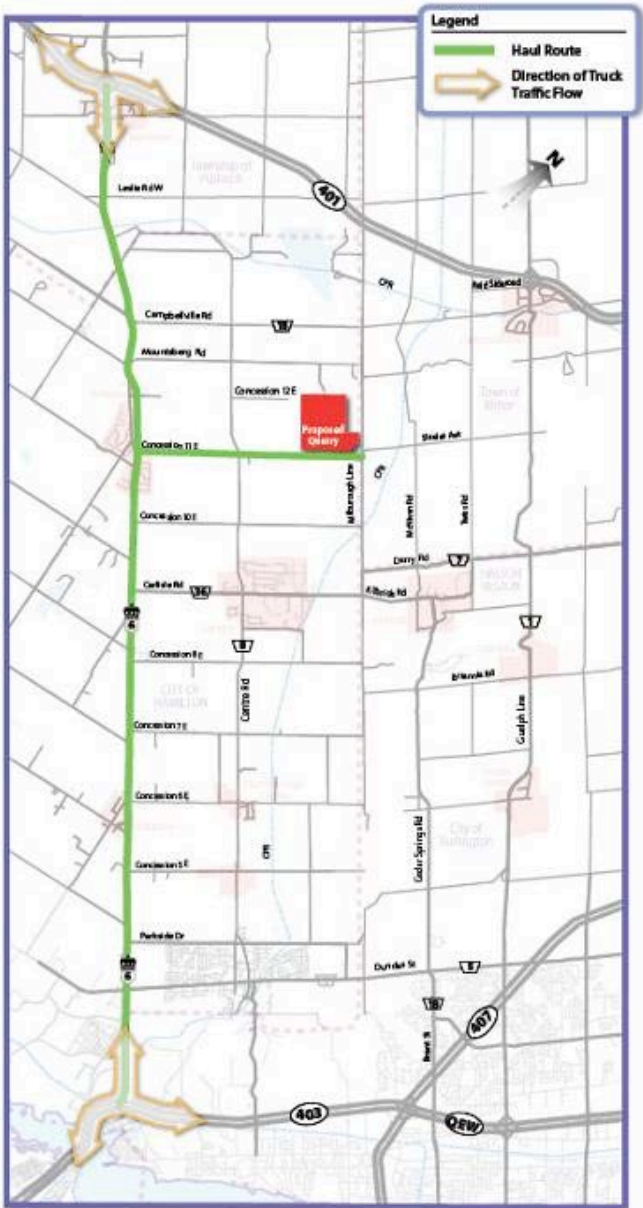
---

- **Based on the interim evaluation, the preferred haul routes in order of preference are:**
  - **Alternative Haul Route 3**
  - **Alternative Haul Route 1**
  - **Alternative Haul Route 2**
  - **Alternative Haul Route 4**
  - **Alternative Haul Route 5**

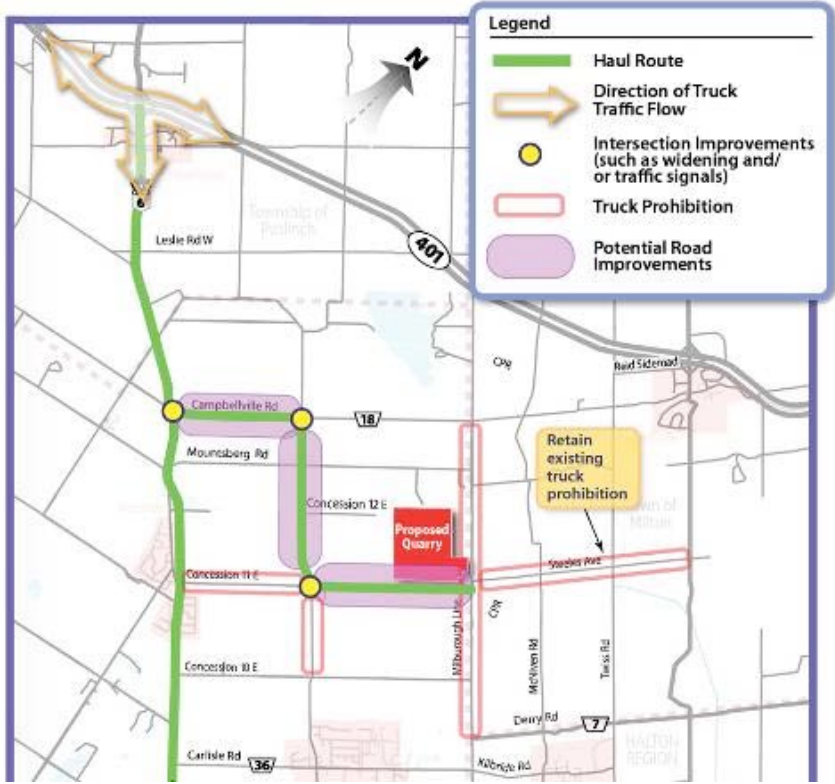
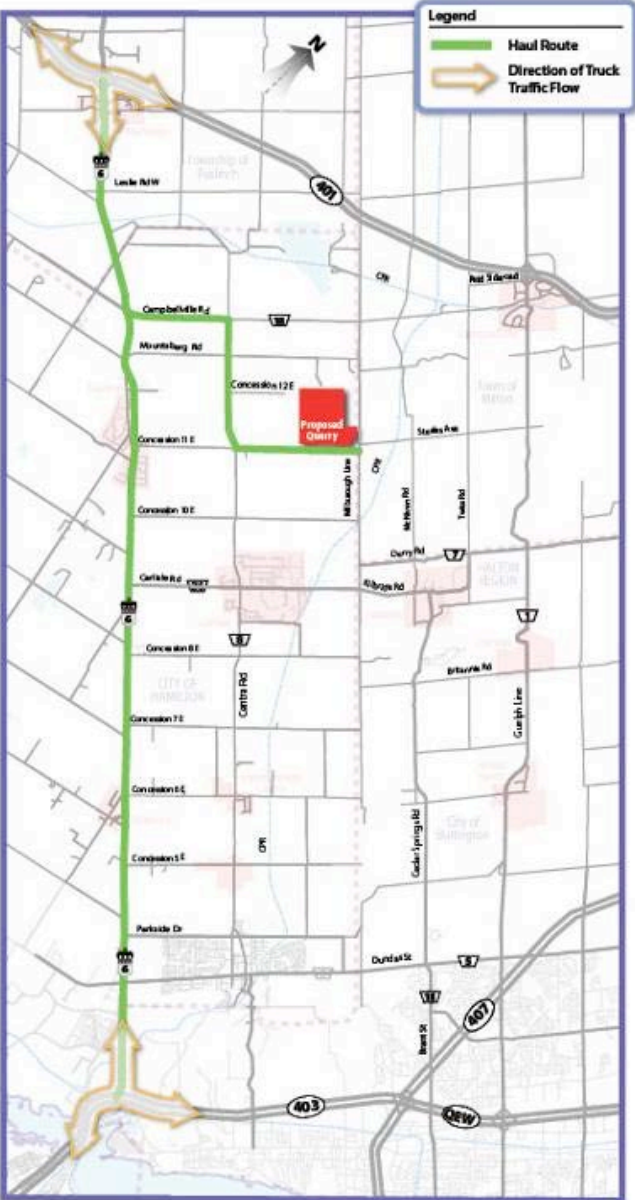
# Alternative 3



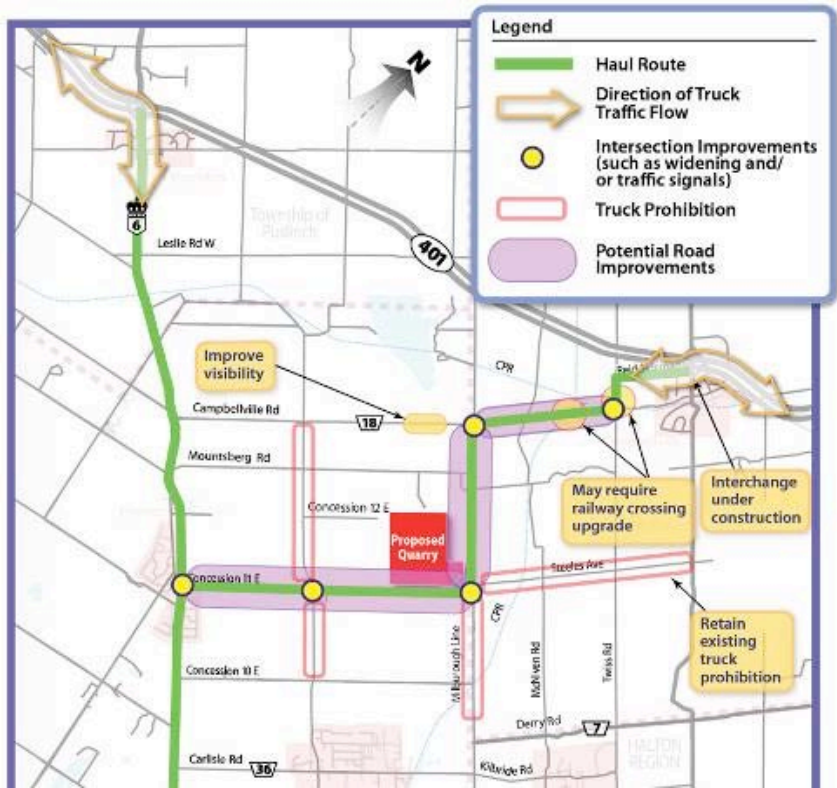
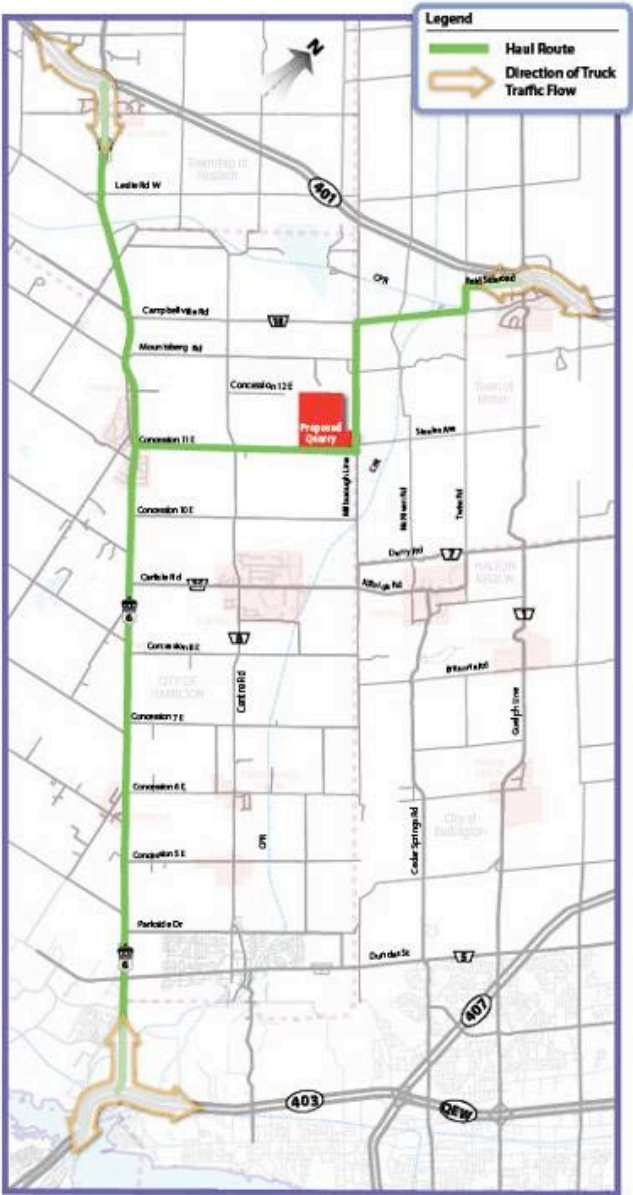
# Alternative 1



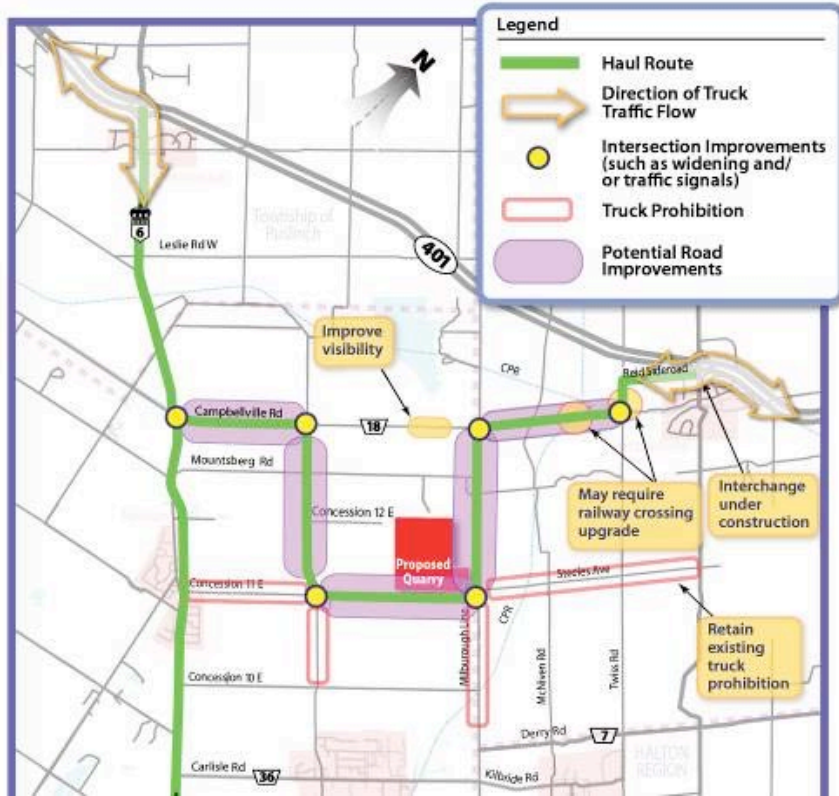
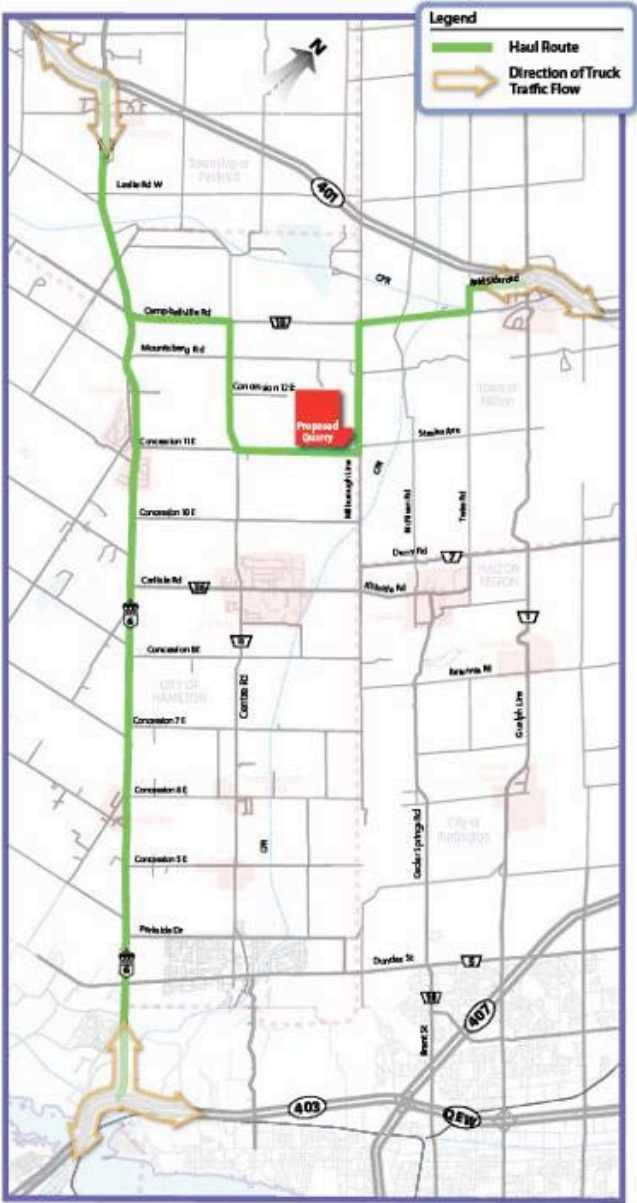
# Alternative 2



# Alternative 4



# Alternative 5



# Summary

---

- **Based on input from the public, CART, stakeholders, and agencies:**
  - **Haul Route Study will be completed**
  - **Draft Report will be circulated for comments from CART and the public**
  - **Haul Route Study will be one part of the information set that the City requires to assess the proposed quarry**

# Next Steps

---

- **Solicit and review input from the public**
- **Continue to submit information to CART and continue ongoing discussions**
- **Continue consulting with agencies and stakeholders**
- **Based on input from the public, CART, stakeholders, and agencies:**
  - **Revise interim analysis**
  - **Revise interim evaluation results**
  - **Prepare preliminary recommendations**

# **Next Public Meeting in the Fall**

---

**Will present for your input:**

- **Revised analysis of haul route impacts**
- **Revised evaluation comparing haul routes**
- **Preliminary recommendations for preferred haul route**
- **Preliminary recommendations for road improvements and mitigation measures**
- **Welcome public input again at that time**

**Thank you!**

---